



**CONGREGATION
AHAVATH SHOLOM**
FROM GENERATION TO GENERATION

November 2022

7 Cheshvan to 6 Kislev 5783

Vol. 88—Number 2



COMMUNITY MITZVAH DAY

9:30 AM
Sunday,
November 13th
At Congregation
Ahavath Sholom

* Breakfast Snacks * Singing
* Doing Good * Meet and Greet
Jewish Community of Menshes

Beth El Congregation
Chabad of Fort Worth
Chabad of Southlake
Congregation Ahavath Sholom
Congregation Beth Shalom

Jobe and Helen Richards Foundation

Trustees: Chicotsky Family

Jewish Federation of Fort Worth & Tarrant County

B'nai B'rith Senior Housing

Event Details on Pages 6 and 7

Bringing God and the Community Closer Together

A Conservative Synagogue affiliated with the United Synagogue of Conservative Judaism

Congregation Ahavath Sholom

Clergy:

Rabbi Andrew Bloom

Officers:

**President
Foster Owen**

**1st Vice President
Hal Ratner**

**2nd Vice President
Jodi Berger**

**Treasurer
Josh Levi**

**Secretary
Rebecca Isgur**

**Immediate-Past
President
Rich Hollander**

Board of Directors:

**Ava Beleck
Sabrina Beleck
JR Faigin
Steve Gratch
Martis Herman
Tatyana Kisin
Rhonda Krupp
Arthur Moses
Justin Newhart
David Nudleman
Hal Ratner
Regina Rog
Mark Rosenfield
Dan Sturman
Shoshana Thomas
Isgur**

Past Presidents:

**Marvin Beleck
Murray Cohen
Dr. Al Faigin
Dr. Nancy Faigin
Stuart Isgur
Harry Labovitz
Ebbi Lavi
Dr. Jerry Stein
Lon Werner**

Learning & Engagement Center:

**Fani Kiselstein
Principal**

CAS Office Staff:

**Pattie Wood
Administrator
Suzi Gardner
Bookkeeper
C. Chrestensen
Administrative
Assistant**

Catering Department:

Maria Loya

**Facility Staff:
Gabriel Sanchez**



FROM OUR RABBI

While we sit at our Thanksgiving tables, it is customary in many families to go around the table and say for what we are

thankful. This is a nice tradition that usually focuses us on what is important. However, what about being thankful the rest of the year?

In the opening blessings of Birkat HaSchar in the morning we are taught to give thanks when we wake. We do this by reciting the Modeh Ani (Thankful am I) prayer, which states, "Modeh Ani, I am grateful to You, living, enduring Sovereign, for restoring my soul to me in compassion. You are faithful beyond measure." To wake in the morning is to be reborn. As we can see in the prayer, nothing is to be taken for granted, certainly not life itself. The first word of prayer is perhaps the most important, "Modeh" (I am thankful for). The essence of the prayer is the grateful acknowledgment of the gifts we have been given (Or Hadash).

Additionally, King David in the Book of Psalms taught us that we should be thankful every day, not only for those around us but even more for God, who is above, around, and within us. This lesson, itself, can be found in Psalm 136, where it is written;

"Hodu Ladonai ki tov; Ki le'olam chasdo."

"O give thanks to the LORD, for He is good;

for His mercy endures forever."

Finally, In the Book of Chronicles, we read, "indeed it came to pass, when the trumpeters and singers were as one, to make one sound to be heard in praising and thanking the Lord, and when they lifted up their voice with the trumpets and cymbals and instruments of music, and praised the Lord, saying: 'For He is good, For His mercy endures forever,' that the house, the house of the Lord, was filled with a cloud" (2 Chronicles 5:13).

This verse tells us that if we want to fill our lives with clouds of gratitude in addition to Thanksgiving, we need to start by thanking not only the important people but also God, for our loved ones are representations of God and reflections of all of us as a community. In the end, we can say that giving thanks begins with the realization of where our thanks come from and for what we are grateful.

Consequently, let us remember to be thankful on this Thanksgiving Day. Let us also never forget that we should be thankful for the other 364 days of the year as well.

B'Shalom and Friendship,
Rabbi Andrew Bloom



PRESIDENT'S MESSAGE

On behalf of myself and the Board of Directors, may you all be inscribed in the Book of Life.

I want to discuss something important with you: Taking time to create "Sacred Communities" in Judaism, starting here at Congregation Ahavath Shalom.

Creating Sacred Communities starts with Relational Judaism and requires a bit of a change in mindset. Let's face it, at the High Holy Day service some of you started to squirm or looked for a way to exit the sanctuary because you knew I was about to ask for your help, both in money and time. We get it, but what I am asking is for you to suspend that thinking for a minute and take time to understand that the need for raising money for the synagogue is so much more than transactional. It feels that way, but I am asking for your support because the dollars are important for this endeavor.

We learn from the Torah that we have a responsibility to our people and the broader community to nurture a greater culture of giving. Dues and appeals seem transactional, and it removes us from the purpose. We must remember that we are following the Mitzvot of Tzedakah and our paths as a Sacred Community to make our congregation a place where our community can gather, pray, and learn. This appeal for your contribution is about sustaining our sacred place throughout the season and for seasons yet to come.

Congregation Ahavath Sholom is our community. We gather in person and online. We gather weekly to come together for Shabbat and learning, yearly for the High Holy Days and Festivals, to celebrate lifecycle events and social activities, and to support others in our community. Whatever it is that brings you to CAS we hope you are and continue to be inspired.

PRESIDENT'S MESSAGE CONTINUED

We are dependent on generous contributions for their ability to help our synagogue to thrive and care for our CAS family and those in our greater community. It is because of this that we ask time and time again to give. Membership dues only account for 36.5% of our operating expenses. Our Board of Directors has worked hard to keep costs down and keep us as efficient as possible in a 42-year-old building while we continue to explore possibilities for improvements. We are thrilled to continue our relationship with the Jewish Education Association and their Lil Gold-man school. It is a joy to have the kids in our building all week long as we provide a sacred space for the next generation to learn and grow. We continue, with help of our wonderful Cemetery Committee, to maintain and beautify our cemetery for our community, a sacred space for those whose memory is a blessing.

Again, this ask is not transactional. It is so much more. Our support is an investment not only in the here and now but also in our future. Just as past generations provided for our CAS family by planning and investing for us, our investments today will make a difference for future generations.

Every gift is a meaningful contribution, whether you give \$18.00, \$1,800.00, or even \$3,600.00. These gifts help us keep costs down for those in need and represent your commitment to helping ensure that CAS will be here for our children, grandchildren, and all future generations. Let us co-create our Sacred community and outlast those that oppose and threaten our existence.

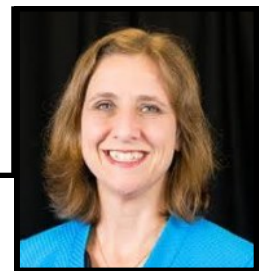
As I always say, "it takes a village," so as much as we continue to do, we are not in it alone. We must take time to show our appreciation. First, THANK YOU, for your continued energy, passion, and support of CAS. Thank you to the Rabbi and Cantor for leading us in services so we can take time to reflect and pray. Thank you to our staff: Pattie Wood, Cameron Chrestensen, Suzi Gardner, Gabriel Sanchez, and Maria Loya; without you, we could not continue to move forward in this new year, 5783. Thank you to our Learning and Engagement Center Principal, Fani Kiselstein, whose dedication shows no limits, and to the school that fills our Shul on Sunday with great energy. And a personal thank you to Marla, for your patience and support.

As we look ahead to the coming year 5783 with hope for good health, happiness, and prosperity, let's take time to think about those we wish to show gratitude, reflect on our choices and behavior, and commit our resources to help our CAS family and community.

You should have received an Appeal Card, either when attending the High Holy Day Services or by mail. Channel that inspiration to a contribution to our High Holy Day Appeal. Move the brad to the amount you are comfortable giving to sustain our Sacred Community and return the card(s) to the CAS office.

L'shanah Tovah Tikatevu
Foster Owen, President

FROM OUR ADMINISTRATOR



As you may be aware, I was hopefully awaiting the Non-Profit Security Grant award announcements. Sadly, CAS was not awarded the grant again this year. We were recommended by the State of Texas to FEMA, and we were 17th on the DFW list for all non-profits with FEMA. Unfortunately, FEMA awarded only 15 grants in our area. Now that we know we were not awarded, we can begin some of the projects that were "on hold." (FEMA will not fund projects already in process.) We will need to balance what we do with what we can use following the CAS vote this winter on the options to remodel our current facility or rebuild in stages on our current site.

I am also working with Cemetery Committee to facilitate updates at the cemetery. Marti Herman and Dan Sturman, along with the fantastic committee, have worked diligently to keep all systems functioning at the cemetery. They have created the Guiding Stars fundraiser to ensure every gravesite has a Star of David marker. This small disk means so much. I encourage you to help them. We are also working on bringing Wi-fi to the chapel to allow security cameras and potentially gate access; installing gate openers that can manage the weight of our beautiful gates, and updating our sidewalks (handicap ramps are already done!) so they are level for safe travel to your loved ones.

Those are the two biggest reports. More has happened at the Shul, of course! We celebrated a Bar Mitzvah. We have fall plants in our planters. The sculpture's recognition plaque was installed (thank you, Arthur). The CAS sukkah was occupied each night of Sukkot. Our High Holy Days ran seamlessly (the online sound issue was resolved as rapidly as possible) with easy ticketing, off-duty FWPD as security, open seating, and the visiting Cantor Pablo Duek and Rabbi Bloom leading services.

These things, I celebrate with you this fall. As always, if you have ideas about how you would like to partner with CAS to share our presence in the community, please let me know.

Pattie Wood, Administrator

CAS CEMETERY BEAUTIFICATION FUNDRAISER

GUIDING STARS

\$36 Donation will help replace the plot markers in the CAS Cemetery.

Call 817-731-4721

Let Their Light Continue To Guide Us

LEARNING & ENGAGEMENT CENTER



Over the past few weeks, we observed the High Holy Days of the month of Tishrei on the Jewish calendar, usually occurring in September and October. These holy days commemorate concepts such as renewal, forgiveness, freedom, and rejoicing in a new cycle of life.

The entire high holy days season begins with Rosh Hashanah, culminates in the solemnity of Yom Kippur, and finally brings joy as we close this magnificent season with Sukkot and its special last two days, Shemini Atzeret and Simchat-Torah.

For Rosh Hashanah, our LEC students participated in a special school-wide project where each class was given a slice of the school's decorative pomegranate to decorate as part of the beautiful display you may have noticed when coming in for services during the high holidays. This was in addition to the individual projects that each class undertook. The students learned about the holiday's meaning, symbols, what a Shofar is made of, and how it differs from antlers.

For Sukkot, we had a festive Havdalah in the Sukkah. We welcomed the new week with the Havdalah ceremony under the sky, fulfilled the mitzvah of eating in the Sukkah, sang songs, prayed together, and played games and crafts.

Rabbi Bloom taught us about the meaning of the Havdalah ceremony and the Sukkot symbols. We all had the chance to bless and shake the lulav. A special thanks and a Todah Rabbah to Rich and Terri Hollander for preparing for us the delicious snacks, dinner, and desserts for our event in the sukkah; Yasher Koach. ישר כוח

Simchat Torah is held on the last day of Sukkot when the year's cycle of the Torah reading is concluded, and the next cycle begins.

We invited Talya Galaganov to teach us all about the Simchat Torah celebration. We sang Hallel songs from the Siddur, the Torah scrolls were removed from the ark, and the students carried the Torah through the synagogue in a joyful procession and folklore dance. It was a very joyful learning experience, and we want to thank her for her goodwill and time.

Every school session, we gather for a school-wide Tefilah in the sanctuary. We end every service with Rabbi Bloom blessing all our students under the cover of the LEC Talit.

After this festive holiday season comes a month full of activity:

- Sunday, November 6th – Daffodil planting event in our children's memorial garden.
- Sunday, November 13th - Community Mitzvah Day - a special event for our LEC students to take part in, along with religious school students from our neighboring congregations. The day will include adult projects and children's activity stations to benefit our local community.
- Friday, November 11th – Family Shabbat – always heart-warming to see us go from strength to strength with all our generations participating in services.

Here's to concluding a festive October, and looking forward to a productive November!

See y'all soon!

Fani Kiselstein, LEC Principal



LEARNING & ENGAGEMENT CENTER



2022-2023 Rabbi Bloom's Confirmation Class

High school students struggle with their identity. They ask a variety of questions, like "Who am I?", "What should I do with my life?", and "Where do I fit in?" The problem is compounded for Jewish youth growing up in an area where they are the minority.

The process of confirmation classes assists Jewish teenagers in developing a strong Jewish identity while helping them to develop the skills that they need in the outside world.

We have scheduled 10 exciting classes for our teens (the first class was October 30th). If you have a high schooler interested in joining these classes, please contact the LEC at lec@ahavathsholom.org.



COMMUNITY MITZVAH DAY

Sunday, November 13th, will be a special day for Congregation Ahavath Sholom as we host Community Mitzvah Day, beginning at 9:30 am.

Members of CAS and our Learning and Engagement Center students and teachers will be joined by Religious School students from Beth El Congregation, Beth Shalom, Chabad Fort Worth, and Chabad Southlake.

Mitzvah Day is an opportunity to teach our children the importance of showing chesed (kindness) to others as we work together to improve the quality of many lives in our community. Community Mitzvah Day reinforces the importance of doing good each and every day. Do good often, and it becomes a wonderful habit. And, best of all, it feels great! It affords us a wonderful way for our Jewish community to come together to engage in the act of Tikkun Olam, repairing the world, through social activism.

The event begins at 9:45 am with light snacks followed by a short welcome assembly, singing with Scott Slotter, and a project overview. Students of all ages have the opportunity to take part in a variety of Mitzvah projects. Adult projects include a blood drive (appointment link available in the CAS weekly email), knitting table, and Habitat for Humanity. Children's activity tables will be open continuously from 10:10 to 11:45 with projects such as making holiday and birthday cards, decorating Chanukah bags for Jewish Family Services Seniors and B'nai B'rith Senior Housing residents, creating birthday bags for children at the Women's Safe Haven, Tzedakah box decorating, and preparing lunch for Habitat for Humanity volunteers. To keep everyone safe and accounted for, we ask that children not enrolled in Religious Schools be accompanied by an adult.

Educators from all the synagogues are hard at work planning an amazing community-wide day of service. We hope that you will join us for this fun and fulfilling event. To sign up to work at Habitat for Humanity, donate blood, or volunteer, please click on the link in the weekly email or the Federation's Five Things Fast email.

Community Mitzvah Day is presented by Beth-El Congregation, Chabad Fort Worth, Chabad of Southlake, Congregation Ahavath Sholom, Congregation Beth Shalom, and the Jewish Federation of Fort Worth and Tarrant County.

Funding provided by the Jobe and Helen Richards Foundation, Trustees: Chicotsky Family, The Jewish Federation of Fort Worth and Tarrant County, and B'nai B'rith Senior Housing.



Knitzvah Mitzvah - Community Mitzvah Day

Calling all knitters and crocheters! Please join us on November 13th, 10:10 - 11:45 at Congregation Ahavath Sholom.

Please bring finished 10" x 10" squares or come knit/crochet squares to piece together to make blankets to donate to the Linus Project (this organization donates hand-made blankets to children in need of a comforting blanket).

The yarn must be washable and dryable. For questions contact Marti Herman at martih@theprintteam.com



COMMUNITY MITZVAH DAY

COMMUNITY MITZVAH DAY, NOVEMBER 13

CAN-STRUCTION



YOU CAN HELP FIGHT HUNGER!

**WHAT WE NEED:
ANY SIZE CANNED
GOODS, AND BOXES
NON-PERISHABLE**

FOR THE FOOD BANK

★ ★ COMMUNITY MITZVAH DAY
November 13

DESIGNS FOR TZEDAKAH

**CREATE YOUR OWN TZEDAKAH BOX
TO TAKE HOME WITH YOU**

😊 Remember, what you put into
your Tzedakah Box, you put in
for the welfare of others. ☁

Birthday in a Bag & Activities in a Bag

Two opportunities to fill bags with toys,
school supplies, activity books, etc to
support those in our area who are in need.

Community
Mitzvah Day



COMMUNITY MITZVAH DAY

MEMORIAL FRIENDSHIP STONE PAINTING



Community Mitzvah Day

Chanukah Goody Bag

Decorating



**Decorate gift bags for the items
Jewish Family Services and B'nai
B'rith Board shares with their
clients for Chanukah**

Community Mitzvah Day

BEADS, BEADS, BEADS!

Create something fun to be
shared in the Birthday in a
Bags! We'll have the supplies
for you to create a special gift
for the children at Women's
Safe Haven.



Keychains, bracelet, necklace - you design!



Mitzvah Day November 13th

CARDS, CARDS, CARDS!

BRIGHTEN SOMEONE'S DAY

With Homemade Greeting Cards



RABBI BLOOM ADULT EDUCATION CLASSES

PARSHAT HASHUVAH:
THE TORAH WITHIN US AND THE
CONNECTION BETWEEN THE PAST
AND THE PRESENT

TUESDAYS

10:30 AM AND 6:30 PM

OPEN TO ALL ADULTS



We're here for your every need!

You choose your menu for:

*B'nai Mitzvahs * Weddings * Baby Namings

*Celebrations

We have the menus for:

Kiddush Luncheon Sponsorships	\$500 +
Kiddush Luncheon Donors	\$100 - \$499

Join us in Food for the Jewish Soul

Schedule your date with Pattie Wood	817-731-4721
Discuss menu options with Rhonda Krupp	682-429-4210
Dan Sturman	817-996-9424

The Bar Mitzvah Is Next Week!

I CAN'T FIND MY

KIPPAH

*I Need a
Mezuzah...*

I'M RUNNING LOW ON

*Shabbat
Candles*

MY TALLIT IS
TATTERED

CAS GIFT SHOP

817.368.5376

GIFTSHOP@AHAVATHSHOLOM.ORG

CAS GIFT SHOP

Beginning **Sunday, November 6th**, the CAS Gift Shop will be open the first Sunday of each month from 9:30 am to 12:00 pm. Just in time for Thanksgiving and Chanukah, the CAS Gift Shop has a variety of items that will satisfy everyone on your list.

CAS President's
Award

CONGRATULATIONS
STUART ISGUR



Ideas or Questions

**CONTACT CAS
EXECUTIVE COMMITTEE**

Foster Owen	Hal Ratner
Jodi Berger	Josh Levi
Rebecca Isgur	Rich Hollander

CAS LIBRARY

CAS Library Welcomes New Book

When you read the back and look at the cover of *Honey Cake & Latkes: Recipes from the Old World by the Auschwitz-Birkenau Survivors*, you will know that this cookbook is long overdue to be on our shelves and in your home. This collection of heirloom recipes is shared by Auschwitz-Birkenau survivors, one of whom is known to CAS. Regina Rog's mother, Lois Flamholz, shares her smile and recipes in this book.



As stated on the back of the book, "Over 110 recipes accompanied by survivors' pre-war recollections and post-liberation memories weave a unique tapestry of sensory experiences of flavors and aromas from the old world, accounts of loss and trauma, as well as heartwarming and poignant tales of new beginnings and healing." The book may be purchased on Amazon and all proceeds benefit the Auschwitz-Birkenau Memorial Foundation.

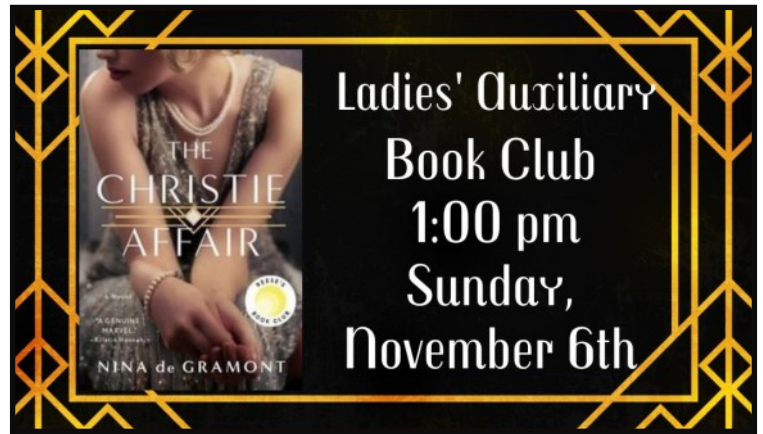
Our thanks to Regina Rog for sharing this treasure!



Regina Rog's mother, Lois Flamholz (pictured above), and her jelly cookie recipe are featured in the book.


HARRIS MARKS
REALTOR

817.888.7185
harris@epiquerealty.com
www.harrismarks.com



LADIES' AUXILIARY

This month, the Ladies' Auxiliary book club will meet at 1:00 PM on Sunday, November 6th, to discuss *The Christie Affair* written by Nina de Gramont.

Nina de Gramont's latest novel, *The Christie Affair*, is an international and New York Times best seller, and the Reese Witherspoon Book Club pick for February, 2022. (goodreads.com)



NEW DATE: HOMECOMING & MOVIE NIGHT

CAS homecoming will be held **Saturday evening, November 19th beginning at 7 pm**. Don your school gear, and join us for the Homecoming Dance in the Zale. Boutonnieres and mini-mums are on sale in limited quantities for your sweetheart. (If you purchased previously, we have your order.) We'll have snacks, a DJ for the dance, and ballot boxes ready for you to cast your vote for Homecoming King & Queen.

For those of you who would have skipped the dance to hang out behind the bleachers, we are screening *American Graffiti* outdoors. Bring your lawn chairs and your flask (you know you had one in your pocket!) to enjoy an American classic.

YAHREZITS - MAY THE MEMORY OF OUR LOVED ONES BE A BLESSING FOREVER

<p>Tue., Nov. 1 7 Cheshvan Laszlo Mittelman Wolff Moses Slata Zenick</p> <p>Wed., Nov. 2 8 Cheshvan Zelick Cohen Benjamin Radetsky Jane Russakov Moshe Wolfovitch</p> <p>Thu., Nov. 3 9 Cheshvan Bernice Abrams Harry Edward Cohen Samson Kamel Isidore Leff Esther Reisberg Hannah Esther Resnick Morris Robinson Isadore Sarvis Bea Slatkin Dr. Jakob Zalman Stettner</p> <p>Fri., Nov. 4 10 Cheshvan Ayouche Attias Joseph Cohen Philip E. Goldstein Sol Hochberger Frieda Kahn Milton L. Kleinfeld Solomon Isaac Mehl Betty Mintz Shirley Neerman Ann Rubin Schuster</p> <p>Sat., Nov. 5 11 Cheshvan Rebecca Barnett David Hirsh Caughey Solomon Charles Freed Harry Ginsburg Pearl Hoffman Ester Olshansky Morton J. Serlin</p> <p>Sun., Nov. 6 12 Cheshvan Steven Gregg Bubly Sam Dwortz Sarah Freedling Sarah Harris Sadie Livingston Marcus Neerman Yetta Rohman Leo Salzman Morris Singer Morris Sosland</p> <p>Mon., Nov. 7 13 Cheshvan Rose Bergman</p>	<p>Mon., Nov. 7 (cnt.) 13 Cheshvan Ida Gray Gina Ellen Rosenfield Levy Lena Nass Charlotte Radetsky Marilyn Raff Ben Salsberg</p> <p>Tue., Nov. 8 14 Cheshvan Louis Bogart Louis I. Cohen Samuel Arthur Frankrich Helen Gernsbacher Shunea Kuptsin Daniel M. Ludgin Harry Michel Irving Selig Rosenthal</p> <p>Wed., Nov. 9 15 Cheshvan Jack Cohen Isaac (Ike) Dorf Bertha H. Fleischer Frank Abraham Hecht Joseph Moses Jack Orlow Joseph Rubenstein Nosen Noteh Sandler David Schwartz Elias Schweiger Thomas Snyder Sam Sobol</p> <p>Thu., Nov. 10 16 Cheshvan Joseph Frank Copelin Ben Dibofsky Esther Golod Paul Shapiro</p> <p>Fri., Nov. 11 17 Cheshvan Sonia Gressman Bernard Jacobson Leonard Karotkin, Jr. Joe Sandler Pincus Sandler Eta Schlaffer</p> <p>Sat., Nov. 12 18 Cheshvan Edith Lesser Lena Murad Lillian Rose Rabinowitz Anna Bailey Rosenberg Abraham "Al" Sankary Sarah Weber Marion Werner</p> <p>Sun., Nov. 13 19 Cheshvan Sarah Tuck Bernstein Joseph Drabkin</p>	<p>Sun., Nov. 13 (cnt.) 19 Cheshvan Dave Herman Alan Nathan Solomon Sidney Raffel Sarah E. Tudzin Alexander Wolens Efrayim Zodin</p> <p>Mon., Nov. 14 20 Cheshvan Sophie Blinderman Anton Grace Ehrlich Harry Hamill Joseph Lewis Levin Yetta Mach Benny Snofsky Phyllis Weber</p> <p>Tue., Nov. 15 21 Cheshvan Irving Corbin Udel Elgurt Mary Jane Miller Marvin Seltzer Sarah Ann Silverman</p> <p>Wed., Nov. 16 22 Cheshvan Manovar Yomtoob</p> <p>Thu., Nov. 17 23 Cheshvan Evelyn Wexler Cohn Frank Edrich Dr. Abe Greines Shirley Linn Lawrence Michael Peitzer Lillian Raimey Meyer Raimey Phillip Ratner Dorothy Reznikoff Marian Schultz</p> <p>Fri., Nov. 18 24 Cheshvan Freda Bloomberg Rosa Cohen Louis Samuel Cristol Dorothy Edrich Ruth Englander Rose Handler Raymond Plotkin Isidore Winderbaum Irene "Rene" Wisch Hannah Wolfvitch</p> <p>Sat., Nov. 19 25 Cheshvan Marian Cohen Abramowitz Sam Benson Dr. David Cristol</p>	<p>Sat., Nov. 19 (cnt.) 25 Cheshvan Judith Lee Feinberg David Ginsburg Rae Shanblum Goldstein Rose Kaplan Mollie Beerman Kessel Eva Kleinfeld Sidney Liebling Raye C. Mehl Jack Rosenberg Norman Winterman</p> <p>Sun., Nov. 20 26 Cheshvan Hyman Abish Toba Battat Lifsha Sandler Berkowitz Marion G. Freyer Sol Mitchell Gilbert Sam Lipshitz Yente Wolfvitch Makashefsky Ethel Rittinger Chire Sandler Esther Clara Seltzer Robert B. Zodin</p> <p>Mon., Nov. 21 27 Cheshvan Bernie Dworkin Rose Fineglass Glickman Daniel Green Cecilia Epstein Klimist Stephen Herman Mehl Lillie Shapiro Hans Joachim Thoma Arthur Tirsun</p> <p>Tue., Nov. 22 28 Cheshvan Dr. Louis Barnett Philip Ruben Bernstein Bert Coopersmith Jake Engler David Faro Dr. Aaron Gordon Bertha Gutman Marsha Hubert Doris Radetsky Pauline Raskin Shirley Rosenberg Ernest Stein</p> <p>Wed., Nov. 23 29 Cheshvan Rose Karasic Bernstein Michael Blanc Henry Bodzy Leba Pearl Brozgold Yitzvhak Chervitz Raphael Cohn Vera Alice Ellis Abraham Luskey Ben H. Rosenthal</p>	<p>Wed., Nov. 23 (cnt.) 29 Cheshvan Benjamin Seltzer Jerry Weinstein</p> <p>Thu., Nov. 24 30 Cheshvan Frieda Gachman Dolores Schneider Marie Uzan</p> <p>Fri., Nov. 25 1 Kislev Abraham Cohen Theresa Cooles Hanna Cuperman Rose Mellinger Louis M. Wisch</p> <p>Sat., Nov. 26 2 Kislev Abraham Joseph Belsky Ben Edenbaum Tom Gens Hannah Gertner Eddy Nations Carolyn Silverman Rubin</p> <p>Sun., Nov. 27 3 Kislev Rae Banks Dworkin Irwin Friedman Joseph Klapp Lillian Labowitz Shirley Witt Robinson Nathan Rubenstein Henry Seals Louis (L.F.) F. Shanblum</p> <p>Mon., Nov. 28 4 Kislev Milton Hamill Aurelia Lippman Minnie Meinstein Easer Rovinsky Samuel Saikin Simon Tannenbaum</p> <p>Tue., Nov. 29 5 Kislev S.H. Coplin Maurice Goldstein</p> <p>Wed., Nov. 30 6 Kislev Juliette Attias Morritz Fleischmann Ida Glazer Freda Greenberg Yetta Haller Esther Horn Sarah Anton Krashin Jimmy Kreines Ann Fleischmann Lidell Shaol Pozez Gustave Jach Rosenberg Sam White</p>
--	--	--	---	--

YAHREZITS - MAY THE MEMORY OF OUR LOVED ONES BE A BLESSING FOREVER

MAZAL TOV!

Birthdays

3-Nov	Juliet Cohen	12-Nov	Lisa Paley	20-Nov	Elsie Blum
3-Nov	Ruthye Kaplan	12-Nov	Daniel Sturman	20-Nov	Craig Lidell
4-Nov	Lynell Bond Norman	12-Nov	Paul Weinstein	22-Nov	Matthew Madderra
4-Nov	Arnold Schectman	13-Nov	Dr. Ariel Feldman	23-Nov	Isaac Hayward
4-Nov	Alex Seiden	14-Nov	Bryn Dolan	24-Nov	Chad Herman
5-Nov	Jodi Berger	14-Nov	Dr. Lester Kuperman	24-Nov	Dr. Michael Kruger
6-Nov	Daniel Collins	15-Nov	Malea Balmuth	24-Nov	Dr. Diana Weinberg
6-Nov	Al Faigin	15-Nov	Reeve Dolan	25-Nov	Foster Owen
7-Nov	Elisa Nudleman	15-Nov	Marc Goldman	27-Nov	Seth Cohen
9-Nov	Hedva Williams	15-Nov	Ilene Zenick	29-Nov	Emily Fine
10-Nov	Rick Chaviers	16-Nov	Aviva Isgur	29-Nov	Dr. Emily Isaacs-Rosen
10-Nov	Jenny Herman	16-Nov	Karen Stoddard	29-Nov	Karen Kaplan
11-Nov	Bootsie Coggan	19-Nov	Jeff Cohen	29-Nov	Karen Paul
11-Nov	Robert Nicholas	19-Nov	Stephanie Dubinsky	30-Nov	Robert Chicotsky
12-Nov	Michael Lavi	19-Nov	Dr. Eliot Slovin	30-Nov	Matthew Sherwin
				30-Nov	Seth Sherwin

Anniversaries

1-Nov	Paul and Judy Weinstein	35 Years	24-Nov	Chelsey and James Hayward	3 Years
5-Nov	David and Melissa Saul	25 Years	24-Nov	Harold and Marcia Malofsky	49 Years
7-Nov	Stephen and Valerie Kaye	30 Years	24-Nov	Dr. Paul and Debra Solomon	22 Years
12-Nov	Herbert and Rosemary Weisblatt	33 Years	25-Nov	Dr. Gavin and Emily Fine	22 Years
14-Nov	Daniel and Jenesse Collins	12 Years	26-Nov	Harry and Peppe Bailin	58 Years
15-Nov	Howard and Jetty Cole	41 Years	27-Nov	Howard and Rhoda Bernstein	45 Years
16-Nov	Stanley and Gail Cohen	28 Years	30-Nov	Samantha and Gary Berry McMillian	3 Years

Wedgwood Family Health Associates

AL E. FAIGIN, D.O.

General Practice & Obstetrics

N.G. FAIGIN, D.O.

Family Practice

5703 WESTCREEK DR. FORT WORTH, TX 76133-3395
(817)294-0731 BY APPOINTMENT ONLY

RT TRAVEL LLC
Robin Tirsun
Owner/Agent

817-263-8131
robin@rttravel.net
twitter - rttravel
facebook - rttravelfanpage

CONTRIBUTIONS

Rabbi's Discretionary Fund

In Honor of

Rabbi Bloom and The Wedding of Dorie Kaye and Joshua Beitchman Dr. and Mrs. J.S. Wilkenfeld

Yahrzeit In Loving Memory of

Nathaniel Myers Adelene Myers & Family
Joseph Gurkoff Gloria Gurkoff
Gary Gurkoff Gloria Gurkoff
Eugene Gurkoff Gloria Gurkoff
Dolores Gurkoff Gloria Gurkoff
Joseph Gressel Philip Gressel

Catering

Elijah Fund In Honor of

Naomi and Mark Rosenfield Dr. Carole Rogers

Elijah Fund In Honor of High Holy Day Aliyah

Dr. Jennifer and Hal Ratner

Elijah Fund Yahrzeit In Loving Memory of

Israel Shafir Brenda Shafir
Samuel Reznikoff Janet Williamson and Mike Reznikoff

Cemetery Operating Fund

In Honor of High Holy Day Aliyah

Martis and Chad Herman
Jackie Herman

Guiding Stars

Jodi and Scott Berger
Michal and Rabbi Andrew Bloom
Martis and Chad Herman
Jackie Herman

Guiding Stars In Loving Memory of

Jon Ray Davidson Anita Davidson

In Loving Memory of

Ted Herman Martis and Chad Herman
Jackie Herman
Frances Michaelson Okon Martis and Chad Herman
Jackie Herman
Shirley Winterman Robin and Jeff Weber
Norman Winterman Robin and Jeff Weber

Yahrzeit In Loving Memory of

Sarah Fried Shirley Givant
Udel Elgurt Lyubov and Aleksandr Gershengoren

Dave Klimist Cemetery Beautification Fund

Yahrzeit In Loving Memory of

Cecilia Klimist Elaine and Larry Daiches
Edith Gachman Harriette and Arnold Gachman
Sadie Abramowitz Joyce Abramowitz

Rabbi Garsek Patriot Garden Fund

Yahrzeit In Loving Memory of

Rabbi Isadore Garsek Patty and Elliott Garsek

General Operating Fund

For the Recovery of

Hal Ratner Dr. Carole Rogers and JFS Committee & Staff

In Honor of High Holy Day Aliyah

Ben Isgur and Shoshana Thoma-Isgur
Valerie and Stephen Kaye
Jim Stanton
Barry Abels
Harriet and Laurence Anton
Sabrina Beleck
Ava and Marvin Beleck

In Honor of

Barbara and Dr. Dennis Schuster Janice & Stuart Herskovitz
The Marriage of Dorie Kaye and Martis and Chad Herman
Joshua Beitchman Jackie Herman

In Loving Memory of

Jane Morgan Skehan Valerie and Stephen Kaye
Yahrzeit In Loving Memory of
Daniel Green Louise and Judd Vermillion
Greg Olshanslay Manya and Anatoly Ioffe

Prayer Book Fund

In Loving Memory of

Dr. Wiktor Haas and Mrs. Malwina Haas Zygmunt J. Haas
Shirley Winterman Robin and Jeff Weber

Religious Education Fund

In Honor of High Holy Day Aliyah

Inbal and David Morris

In Loving Memory of

Dr. Stan Kurtz Elisa and David Nudelman

Yahrzeit In Loving Memory of

Libbe Berger Jodi and Scott Berger
Mordukh Nayberg Brenda Shafir
Warren J. Blackstone PHD Eleanor Halperin
Willard Glazer Lynn and Jary Glazer

Kiddush Luncheon Donors

Naomi and Mark Rosenfield

In Honor of

Bob Lucero's Conversion Linda Paddack
Roz Rosenthal's Birthday Mary Frances Antweil
Margie Glazer
Gail Granek
Carole Rogers
Regina Rog

Happy Birthday - Sadie Grossman, Rebekah Seiden, and Anna Grossman

Yahrzeit In Loving Memory of

Jean Kaplan Mike Reznikoff and Janet Williamson

ELIJAH FUND

Elijah Fund

"Let all who are hungry, come and eat."

The Torah commands us: "When you reap the harvest of your land, you shall not reap all the way to the corner of your field or gather the gleanings of your harvest."
(Leviticus 23:22)

The Elijah Fund helps qualified CAS members participate in events with meals requiring a charge.

To make a donation, please call the CAS office (817-731-4721).

To request use of the Elijah Fund, contact Suzi Gardner (817-731-4721 X 115).

Thank You CAS GREETERS

JOYCE ABRAMOWITZ
RICH HOLLANDER
TATYANA KISIN
MYRON KRUPP
RHONDA KRUPP
DEBBY RICE
REGINA ROG
DIANA WEINBERG



UNVEILING

UNVEILING FOR
LAURA LEE COHEN
11 AM
NOVEMBER 25, 2022
AHAVATH SHOLOM CEMETRY

Need a ride?
Call Clearfork Transportation
NON EMERGENCY TRANSPORT
Raymond Marks 817-353-2098
www.clearforktransportation.com
Getting You Where You Need To Go - Safely.

Yom Kippur Bimah Flowers

In Memory Of

Gerry and Ted Brown
Nina and Mose Herman
Ted Nathan Herman

Sponsored by

Suzie and Ben Herman
Martis, Chad, and Jackie Herman

Yom Kippur Bimah Flowers

In Memory Of

Frances Michaelson Okon
Betty and Jack Michaelson
Lois and Ben Okon

Sponsored by

Suzie and Ben Herman
Martis, Chad, and Jackie Herman

WE GRATEFULLY ACKNOWLEDGE
THE CONTRIBUTIONS OF OUR
MEMBERS AND FRIENDS



DONATION FORM

DONOR NAME: _____

ADDRESS: _____

Donation is made ☐ In Loving Memory ☐ In Honor Of ☐ With Best Wishes (recovery)

Honoree(s): _____

Send Acknowledgement Card to: _____

Publish in Bulletin: ☐ Yes ☐ No

Name: _____

Address: _____

Payment Options: _____

Amount of Donation: _____

Credit Card: ☐ MasterCard ☐ Visa ☐ American Express ☐ Discover ☐ Check

Card Number: _____ **Expiration Date:** _____ **CVV:** _____

Name on Card: _____ **Zip Code:** _____ **Phone:** _____

Please Check Your Preference:

FUNDS (\$18 minimum except where noted)

- | | |
|---|---|
| <input type="checkbox"/> General Operating Fund | <input type="checkbox"/> Dave Klimist Cemetery Beautification Fund |
| <input type="checkbox"/> Religious Education Fund | <input type="checkbox"/> Rabbi Garsek Patriot Garden Fund |
| <input type="checkbox"/> Catering Fund (Kiddush Luncheons start at \$100) | <input type="checkbox"/> Rabbi's Discretionary Fund |
| <input type="checkbox"/> USY/KADIMA Fund | <input type="checkbox"/> Cantor's Discretionary Fund |
| <input type="checkbox"/> Flower Fund (\$75 for Bimah Flowers) | <input type="checkbox"/> R.D. & Beverly Moses Youth Lounge Fund |
| <input type="checkbox"/> Prayer Book Fund (\$54) | <input type="checkbox"/> Don Herman/Scott Zarrow Chevra Kadisha Fund |
| <input type="checkbox"/> Elijah Fund | <input type="checkbox"/> Sukkot Pavilion Fund (bricks \$100 to \$1,000) |
| <input type="checkbox"/> Shabbat Music Fund | <input type="checkbox"/> Yahrzeit Plaque (\$350 each) |
| <input type="checkbox"/> Cemetery Operating Fund | (Please provide loved one's name in English and Hebrew and month, day and year of passing.) |

ENDOWMENTS (\$50 Minimum except where noted)

Contributions to CAS Endowment Funds are intended to provide long-term, continued support for major synagogue activities.

- | | |
|---|---|
| <input type="checkbox"/> Perpetual Education Endowment Fund (starting at \$250) Golden Book Inscription \$360 | <input type="checkbox"/> The Rebecca and George Levitan Planned Giving Fund |
| <input type="checkbox"/> Tree of Life Endowment Fund: Memorial Leaf (outside Rashti Chapel) \$1,800 Tree of Life (outside of Barnett Sanctuary) \$1,200 | <input type="checkbox"/> Cemetery Perpetual Upkeep Endowment |

Donations may also be made by calling the office (817-731-4721) or online at www.ahavathsholom.org.

To make a donation, fill out the form and mail it with your payment to:
Congregation Ahavath Sholom, 4050 South Hulen St., Fort Worth, TX 76109

2022-2023 LEC Student Enrollment Form

Please complete the form below to enroll your student. If you are enrolling more than one student, you'll need to complete additional forms. Online registration is available through the weekly CAS email. Classes start September 11th.

Student Information	
Student Name:	
Student Hebrew Name (Please write in English):	
Birth Date:	Returning LEC Student? (Y/N)
Name of Synagogue Where You Are A Member:	
School Information	
Grade Level as of 08 /01/ 22:	
Youth Group (USY or Kadima):	
School Attending:	
Emergency Contact Information	
Emergency Contact Name and Relationship:	
Emergency Contact Phone Number:	
Alternate Emergency Contact Name:	
Alternate Contact Phone Number:	
Medical Information	
This information is being requested in order to better serve our students. It will be kept confidential and shared only with necessary staff members. If there are no issues, please write N/A in the answer field.	
Has Student Received All Required Vaccinations? (does not include COVID 19) (Y/N)	
Allergies (Y/N)	If Yes, Please List:
Student Accommodation:	
Medical Release: In the event of an emergency, I hereby give qualified medical personnel permission to secure proper treatment for my child, including, if necessary, hospitalization. I understand that I will be contacted immediately in such a case.	
Medical Release (Indicate either I Agree/I Disagree):	
Parent Information	
Name (First and Last Name):	
E-mail:	
Mobile Number:	Alternate Number:
Address:	
Additional Information	
Who is Authorized to Pick-Up?	
Photo Release: Image may be published. (Y/N)	
Does your child have permission to attend field trips? (Y/N)	
By signing your name below you are indicating that you have read and agree to all of the above. Congregation Ahavath Sholom does require that you have an up to date family membership. There may be some additional fees for additional activities, such as field trips or a program that is outside of our usual programming. I agree to the above conditions, statements, and policies and promise to pay all tuition, membership, and fees as stated.	
Signature:	Date:
Printed Name:	

Congregation Ahavath Sholom
4050 South Hulen St.
Fort Worth, TX 76109

Non-Profit
Organization
U.S. Postage
PAID
Ft. Worth, TX
Permit No. 3310



Schedule of Our Services

Unless otherwise noted, services are held in-person and online.

Kabbalat Shabbat (Friday)	6:00 PM	Monday-Friday Morning Minyan	6:55 AM
Shabbat Morning (Saturday)	9:30 AM	Rosh Chodesh (New Month)	6:45 AM
National Holidays	9:00 AM	Monday -Thursday Evening Minyan	6:00 PM
		(online only)	